

Premium LCD touchscreen sub-controller



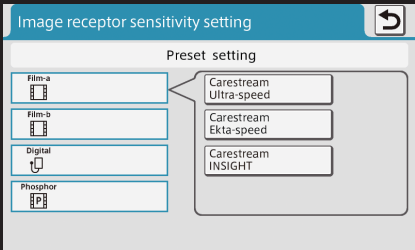
Intuitive and easy selection

Intuitive and easy selection of tooth type, cone type, film / digital modes, film speed, kV, mA and patients size.

Customizable LCD display view

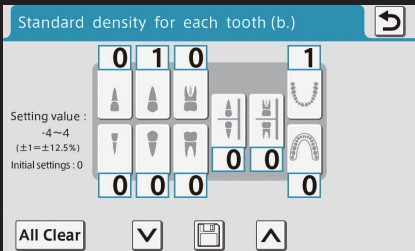
LCD display view can be customized for operator preference. Built-in USB side port enables operators to import personalized screen saver photographic images or dental practice / doctor's name for practice identification and branding.

Sensitivity setting



Select your image receptor on the screen, then suitable sensitivity setting will be selected from 16 steps automatically.

Tooth density



Tooth density ratio settings can be adjusted from the default setting for each tooth.

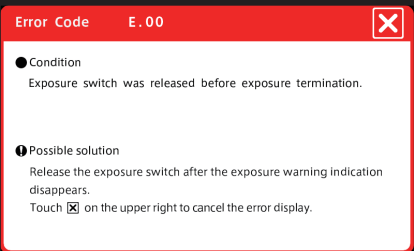
A Sum of radiation dose display
Check the radiation dose of each patient. Reset the sum by keeping touch the sum number.

B Change the exposure time easily by touching the arrow and obtain the image you desire.

C Display of radiation dose of each exposure.

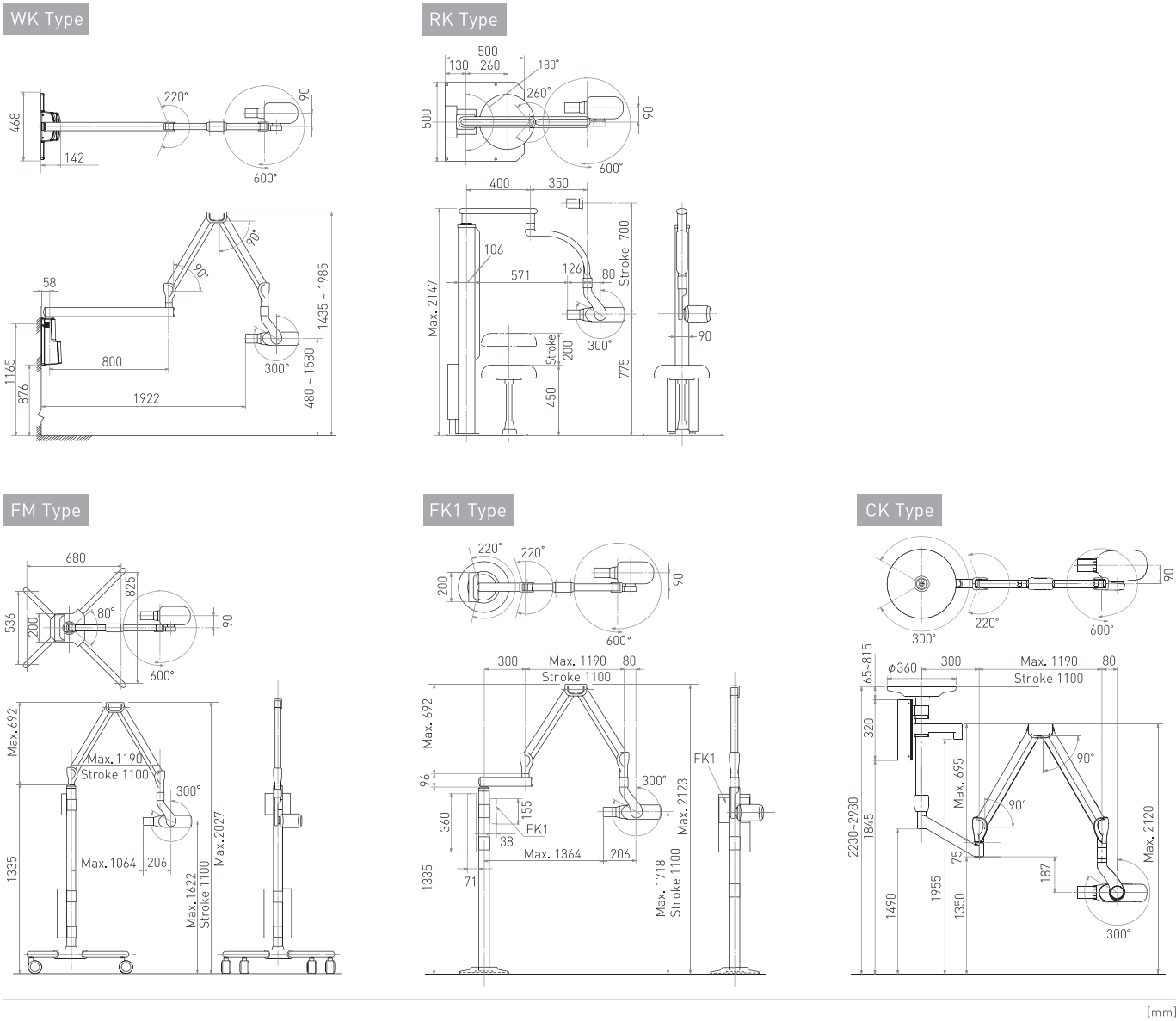
If the darker (or lighter) radiographs are preferred, the sensitivity setting can be adjusted manually.

Error message troubleshooting



If the X-ray should encounter any abnormal conditions, an error message will be displayed on the LCD sub-controller screen as well as the suggested troubleshooting solution for the abnormal condition.

Dimensions



Nominal focal spot value	0.4 (IEC 60336)	
Rated tube potential	60 kV / 70 kV (selectable)	
Rated tube current	3 mA / 6 mA (selectable)	
Rated line voltage	100 / 110 / 120 / 220 / 230 / 240 V AC 50 / 60 Hz	
Rated line current (at 70 kV / 6 mA)	・ 11.0 A (100 V) ・ 10.5 A (110 V) ・ 10.0 A (120 V) ・ 6.4 A (220 V) ・ 6.2 A (230 V) ・ 6.0 A (240 V)	
Line voltage range	± 10%	
Exposure time	0.01 to 2.0 sec.	
Total filtration	2.0 mmAl Equivalent at 70 kV	
Source to skin distance (SSD)	Regular cone	203 mm
	Long cone (option)	305 mm
	Rectangular collimator (option)	SSD of cone + 40 mm
Duty cycle	1 : 30	
Half value layer	1.5 mmAl over	
Density preprogram	Film	16 programs
	Digital Sensor	16 programs

Names of Components
Dental X-ray : PHOT-XIIS MODEL 505
: PHOT-XIIS 505
: PHOT-XIIS
: PHOT-XIIS MODEL 505 DENTAL X-RAY SYSTEM
: PHOT-XIIs MODEL 505
: PHOT-XIIs 505
: PHOT-XIIs
: PHOT-XIIs MODEL 505 DENTAL X-RAY SYSTEM
: PHOT-XIIs 505 WITH ACCESSORIES



Reliable DC X-ray by Belmont

Belmont's High Frequency Technology allows for

- High resolution image by a small focal spot
- Reduced skin dosage with optimum radiation level for every diagnostic need
- Easy to position compact tube head
- Ideal matching for digital imaging system

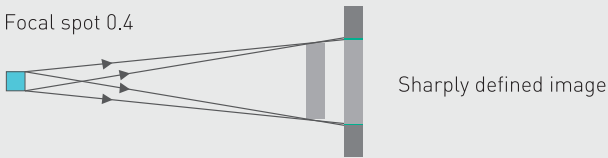
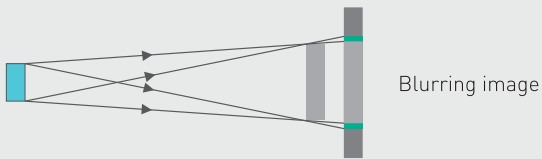


Standard Sub-controller



Features

Small 0.4 focal spot value for the sharpest image possible



Radiation dosage

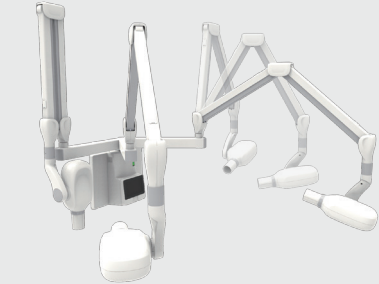
PHOT-XIIS utilizes a Direct Current (DC) generator to minimize radiation absorbed by patients. In addition, there are 36 programmable exposure time settings between 0.01 to 2.0 seconds to fine tune the precise amount of radiation required to produce an excellent radiographic image.

Easy to position compact tube head



The tube head is light weight, compact and easy to hold. This enables the operator to align the tube head accurately every time.

Realization of Slim and light arm



Light head, smooth movement

Our spring arm is designed to have a good balance with load and repulsive force at any position within the movable range and make it possible to make tube head stay at any point when the hands are released. Moreover, well balanced rigidity design helps to reduce the vibration of the tube head after positioning. These methods realize the smooth and easy positioning of the tube head.

Optimum radiation level for every patient

The operation is simple. Select patient type and tooth type, then press the exposure switch. The exposure time can also be adjusted manually. After the exposure, the radiation output can be displayed in the window.

Tube voltage selection

PHOT-XIIS provides 2 tube voltage settings to optimize imaging for specific purposes:

[60 kV Setting]

- Setting provides balanced contrast for general caries diagnostic imaging.
- Setting provides excellent definition and detail for periapical and bone structure diagnostic imaging.

[70 kV Setting]

- Setting provides excellent diagnostic imaging for periodontal disease examination.
- Setting supports imaging of pediatric patients. Pediatric patient motion affects outcome of radiographic imaging less when this tube voltage is used in conjunction with decreased exposure time settings.

Five types of installations

- WK Wall mounted type
- RK Room type with stool
- FM Mobile type with castors
- FK Floor mounted. Sub-controller can be installed on the pole (FK1) or on the wall (FK2)
- CK Ceiling mounted type. Dental light can be mounted on the pole as an option (CKL Type)



WK Type [Sub-controller can be mounted on the main controller or on the wall]



RK Type



FM Type



FK1 Type



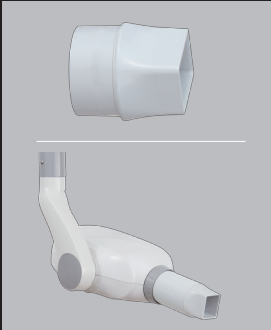
CK Type

Options

- Horizontal arm length of WK Type is selectable : 300 mm, 500 mm, 650 mm, 800 mm (standard) and 1000 mm
- Ceiling pole length of CK / CKL Type is selectable : 600 ~ 1350 mm
- Long cone (Short cone + Long cone collimator) for paralleling technique
- Rectangular collimator
- Hand exposure switch with coiled cord (Option for WK, RK, FK2 and CK. Standard for FM and FK1.)



Short cone + Long cone collimator



Short cone + Rectangular collimator



Hand exposure switch